

SP

EZ Loc

® Cable Seal 1/16"



CABLE SEAL

EZ Loc is a medium-duty cargo security seals featuring non-preformed security cable that frays when cut with various marking options for customized tracking. The EZ Loc 1/16" is approved by the sweetener industry for bulk rail & truck shipments

#### APPLICATIONS

- Rail Cars
- Containers
- Hopper Cars
- Tank Cars
- Tanker Trucks
- Truck & Trailer Doors
- Valves and Meters
- Intermodal Containers

#### FEATURES

- Available as a Standard Product
  - Order online and GET IT NOW, FOR LESS!
- Available as Non-ferrous EZ Loc for flammable environments
- Features non-preformed security cable that frays when cut
- Remove with cable cutters
- Pulls tight for maximum security

#### MATERIAL

- Lock body: corrosion-resistant cast zinc
- Cable: galvanized non-preformed aircraft control cable

#### STRENGTH CHARACTERISTICS

- 1/16" Tensile strength: 750 lbs (3.3 kN)
- 3/32" - Tensile strength: 100lbs (4.6kN)
- 1/8" - Tensile strength: 3300lbs (15 kN)

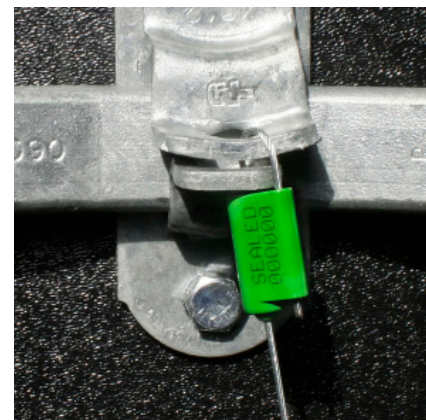
#### DIMENSIONS

Cable diameter:

- 1/16" (1.5 mm)
- 3/32" (2.5 mm)
- 1/8" (3.2mm)

Standard cable length: 12" (305mm)

Custom lengths available in 2" (5 cm) increments



#### DISCLAIMER

THIS INFORMATION IS PROVIDED AS A GENERAL GUIDE, INCLUDING DIMENSIONS. IT IS THE CUSTOMER'S RESPONSIBILITIES TO SELECT THE PROPER CONTAINER FOR PRODUCT AND APPLICATION COMPATIBILITY.

DISTRIBUTED BY:



REF NO.:

DWG30450

DESCRIPTION:

Trailer Seal, .064 in x 24 in, Metal EZ Loc