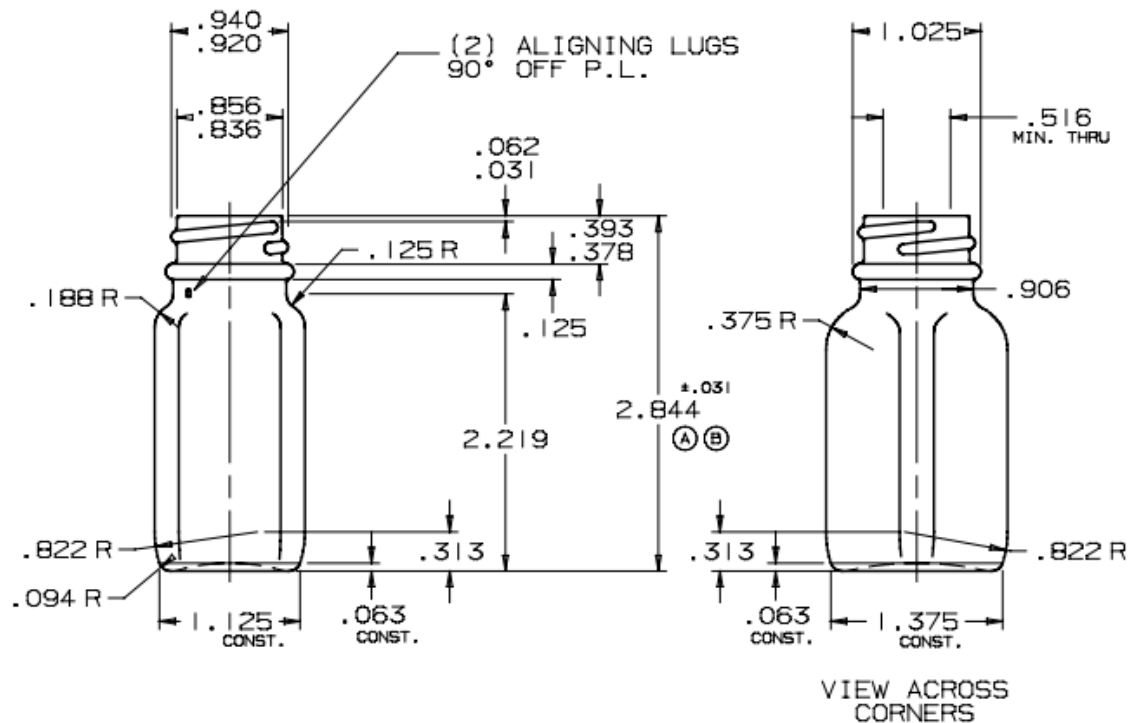
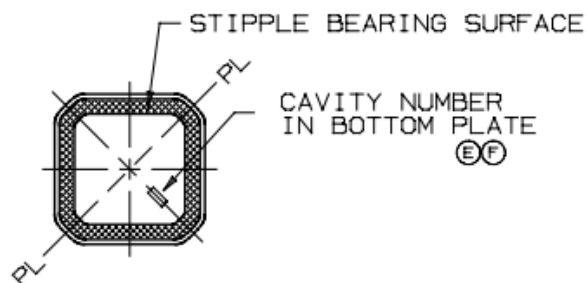


DEPRESSED THD @ SEAMS



VIEW ACROSS CORNERS



DISCLAIMER

THIS INFORMATION IS PROVIDED AS A GENERAL GUIDE, INCLUDING DIMENSIONS. IT IS THE CUSTOMER'S RESPONSIBILITIES TO SELECT THE PROPER CONTAINER FOR PRODUCT AND APPLICATION COMPATIBILITY.

DISTRIBUTED BY:



REF NO.:

DWG31114

DESCRIPTION:

1 oz Flint Glass French Square, 24-400

CARTON SPECIFICATION

ORIGINAL
 REVISION OF CARTON NO. 1021503
 DATE 4/06/09

CARTON NO. 1021504
 DATE 6/17/18

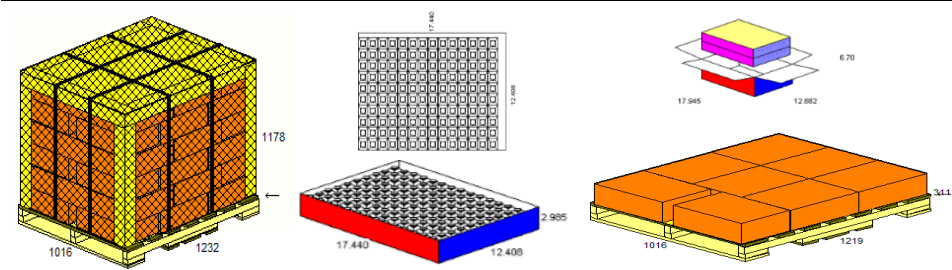
PANEL # 1 (SIDE)	PANEL #2 (END)	PANEL #3 (SIDE)	PANEL #4 (END)
STOP THINK! LIFT		FRAGILE GLASS HANDLE WITH CARE THIS SIDE UP	
280 PCS. T4265Q-RQQ FLINT 1 OZ. FRENCH SQUARE	(MFG. LOGO)		(MFG. LOGO)
(Manufacturing Location)		(SKU #) (Carton Mfg. Date)	

OUTER BOARD: <u>KRAFT</u> INK COLOR & GCM1 NO.: <u>BLACK # 90</u>	<p>NOTES: GLUED MANUFACTURING JOINT INSIDE. AUTOMATIC CASE SEALED. CUT BACK EACH BOTTOM FLAP 1/16".</p> <p>CHANGES: 4/06/09: 1021502 TO 1021503 TO CHANGE INK FROM BLUE TO BLACK PER STDS.-DMF 6/17/18: 1021503 TO 1021504 TO CHANGE S4265R TO T4265Q-RQQ.-DMF</p>
--	---

<p><u>DISCLAIMER</u></p> <p>THIS INFORMATION IS PROVIDED AS A GENERAL GUIDE, INCLUDING DIMENSIONS. IT IS THE CUSTOMER'S RESPONSIBILITIES TO SELECT THE PROPER CONTAINER FOR PRODUCT AND APPLICATION COMPATIBILITY.</p>	DISTRIBUTED BY:	REF NO.: DWG31114
DESCRIPTION: 1 oz Flint Glass French Square, 24-400		

Primary / Secondary Packaging Specification

							UOM				
PGL Ref #	GKXXXXA	GKXXXXB	GKXXXXC	GKXXXXD	GKXXXXE		BOX SIZE	448 X 319 X 154		mm	
Component Per Set	BOX	PARTITION	TRAY	PLATE	SLEEVE	UOM	PARTITION SIZE	NA		mm	
	1	0	2	0	0		TRAY SIZE	432 X 310 X 73		mm	
Number of Plies	3	0	3	0	0	No.	PLATE SIZE	NA		mm	
							SLEEVE SIZE	NA		mm	
Type of Material	KRAFT	NA	KRAFT	NA	NA		PACKING ARRENGMENT	14x10x02 = 280 PCS / BOX			
Type of Flute	C	NA	B	NA	NA		Remarks: GLASS TO GLASS POP-UP TRAYS IN A CARTON NECKS UP 10 ROWS OF 14 PCS., 140 BOTTLES PER TRAY, 2 TRAYS PER CARTON CENTER LOAD ON PALLET. ALTERNATE PALLET PATTERN. CARTONS TO BE PALLETIZED RIGHT SIDE UP. 1. TIER SHEETS : PLACE ONE CHIPBOARD TIER SHEET ON PALLET AND ONE ON TOP OF LOAD. (TOP TIER SHEET NOT NEEDED IF USING THE BAGGER) 2. SIDE PROTECTOR (CORNER BOARDS) : USE SIDE & TOP EDGE PROTECTORS AT CORNERS INSIDE. BOTTOM OF PROTECTORS TO BE EVEN WITH THE TOP OF THE PALLET. 3. BAGGER : SHRINK WRAP BAG AROUND ENTIRE LOAD INCLUDING PALLET. WHEN BAGGER IS NOT AVAILABLE, USE THE FOLLOWING ALTERNATIVE WRAPPING METHOD 4. ALTERNATIVE WRAPPING STRETCH WRAP: USE AUTOMATIC STRETCH WRAP MACHINE. USE APPROPRIATE GAUGE WRAP FOR TALL PALLET. STRETCH WRAP. (3 WRAPS ON TOP & 3 WRAPS ON BOTTOM OF LOAD). STRETCH WRAP LOAD TO PALLET. STRETCH WRAP ENTIRE PALLET. 5. STRAPS : USE AUTOMATIC STRAPPING TOOL. 2 VERT. STRAPS LONGWAY 5" FROM EACH EDGE. 2 VERTICAL STRAP SHORTWAY 5" FROM EACH EDGE. LOAD TO BE STRAPPED TO THE PALLET WITH ALL VERTICAL STRAPS.				
Length - (ID)	448	0	432	0	0	+/-3 mm					
Width - (ID)	319	0	310	0	0	+/-3 mm					
Height - (ID)	154	0	73	0	0	+/-3 mm					
Weight of Component	450	0	125	0	0	gms					Bottle Weight in gram
Burst Factor	28*28*28	NA	GOLDEN HRCT 150x3	NA	NA		Bottle Height in mm	72.24	Box Gross Weight	13.07	kg
Paper GSM	200*180*200	NA		NA	NA	GSM	Bottles / Box	280	Layer / Box	8	Nos.
Bursting Strength	32 ECT	NA	26 ECT	NA	NA	kg/sq.cm	Pallet Type	*48x40 HT*	Pallet Weight	15	kg
Moisture Content	8	NA	8	NA	NA	%	Palletized Details				
Type of the Joint	PASTED	NA	PASTED	NA	NA		Container Type	40 FT HC OCEAN CONTAINER	UOM	40 FT HC OCEAN CONTAINER	UOM
Configuration Length x Width	14x10x02	NA	14x10x01	NA	NA	L X W	Layers / Pallet	6	Nos.	6	Nos.
Bottles / Box	280	NA	140	NA	NA	No.	Total Layers / Pallet	48	Nos.	48	Nos.
INSTRUCTIONS : 1. CARTON : SW 200#-C-FLUTE / 32 ECT NOTE: BOTTOM FLAPS TO BE CUT BACK 1/16". EXTENDED GLUE TAB, SLANT CUT AND CRUSHED. 2. CARTON SEALING INTSTRUCTIONS : TOP PS TAPE – BOTTOM PS TAPE OR AUTO TAPE MACHINE. 3. CARTON PRINTING : SEE CARTON SPEC FOR PRINTING INFORMATION. 4. TRAY : TRAY RIGID SW 150#-B-FLUTE / 26 ECT NOTE: BOARD MUST BE GOOD QUALITY. DIE CUT BLANKS NOTE: GLUE TABS ON THE LONG FLAP SIDE, PERFORATE ALL FOLDS AND CORNERS FOR EASY FOLD DOWN - CORRUGATIONS LONGWAY. 5. PALLET LABELS: P.S. LABEL FRONT & BACK OF PALLET WITH THE FOLLOWING INFORMATION: MATERIAL#, DESCRIPTION, GLASS TYPE, QUANTITY PER PALLET, VENDOR LOT# (LAST 6 DIGITS OF PROD. ORD#), MFG. LOCATION, & MFG. DATE.							Qty / Pallet	13440	Nos.	13440	Nos.
							Pallet Net Weight Approx -	1304	LB	591	Kg
							Pallet Gross Weight Approx -	1430	LB	649	Kg
							Total Pallet Height Approx -	45	Inch	1148	mm
							Pallet / Container -	30	Nos.	30	Nos.
							Box / Container -	1440	Nos.	1440	Nos.
							Qty / Container -	403200	Nos.	403200	Nos.
							Net Weight -	39118	LB	17.74	Tons
							Gross Weight -	42902	LB	19.46	Tons



DISCLAIMER

THIS INFORMATION IS PROVIDED AS A GENERAL GUIDE, INCLUDING DIMENSIONS. IT IS THE CUSTOMER'S RESPONSIBILITIES TO SELECT THE PROPER CONTAINER FOR PRODUCT AND APPLICATION COMPATIBILITY.

DISTRIBUTED BY:		REF NO.:
DESCRIPTION:		DWG31114
1 oz Flint Glass French Square, 24-400		