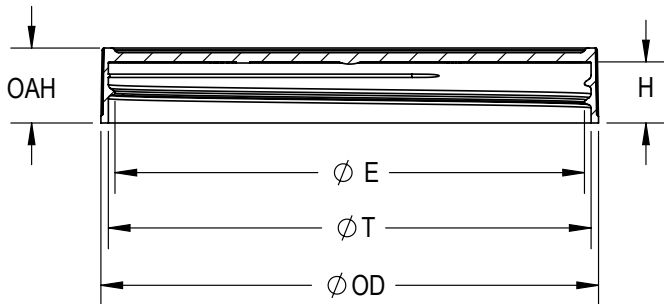


B
C



SECTION A-A
SCALE 2 : 3

THREAD DETAIL
5 THREADS PER INCH
0.200" [5.06 PITCH]

| REFERENCE | TOLERANCE | DIMENSION | UNITS |
|-------------|---------------|----------------|---------|
| E | ±0.014 [0.35] | 4.226 [107.34] | in [mm] |
| T | ±0.014 [0.35] | 4.346 [110.39] | in [mm] |
| H | ±0.014 [0.35] | 0.558 [14.17] | in [mm] |
| OAH | ±0.014 [0.35] | 0.675 [17.15] | in [mm] |
| OD | ±0.014 [0.35] | 4.480 [113.79] | in [mm] |
| PART WEIGHT | ± 2.0 | 21.65 | g |

DISTRIBUTED BY:



REF NO.:

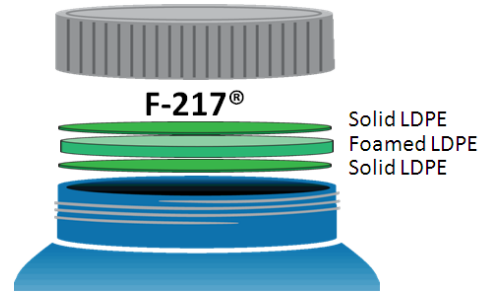
DWG30835

DISCLAIMER
THIS INFORMATION IS PROVIDED AS A GENERAL GUIDE, INCLUDING DIMENSIONS. IT IS THE CUSTOMER'S RESPONSIBILITIES TO SELECT THE PROPER CONTAINER FOR PRODUCT AND APPLICATION COMPATIBILITY.

DESCRIPTION:

110-400 Black PP Matte Top, Ribbed Sides Cap with F217 Liner

- This data sheet describes F-217® products
- This product is a three-ply co-extruded liner consisting of a foamed Low Density Polyethylene (LDPE) core sandwiched between two layers of solid Low Density Polyethylene



MRP Description - (024)F217.035 PL

Typical Product Attributes

Construction

| Structure | Solid LDPE / Foamed LDPE / Solid LDPE | Solid LDPE / Foamed LDPE / Solid LDPE |
|-----------------------------------|---------------------------------------|---------------------------------------|
| Color | White or as Specified | White or as Specified |
| Density | | |
| for 20 ~ 30 mil (0,51 ~ 0,76 mm) | 0,48 ± 0,03 g / cm ³ | 30 ± 2 lbs / ft ³ |
| for 35 ~ 125 mil (0,89 ~ 3,18 mm) | 0,40 ± 0,03 g / cm ³ | 25 ± 2 lbs / ft ³ |
| Thickness Tolerance | | |
| for 20 ~ 60 mil (0,51 ~ 1,52 mm) | ± 0,127 mm | ± 5 mil |
| for 65 ~ 90 mil (1,65 ~ 2,29 mm) | ± 0,178 mm | ± 7 mil |
| for 95 ~ 125 mil (2,41 ~ 3,18 mm) | ± 0,254 mm | ± 10 mil |
| Available Width | | |
| for 20 ~ 60 mil (0,51 ~ 1,52 mm) | 22,2 ~ 1016,0 mm | 7/8 ~ 40 inch |
| for 65 ~ 125 mil (1,65 ~ 3,18 mm) | 25,4 ~ 228,6 mm | 1 ~ 9 inch |
| Width tolerance | ± 1,6 mm | ± 1/16 inch |

Regulatory Compliance

| | |
|------------------------|---|
| FDA Compliance | 21 CFR 177.1520 (Olefin Polymers) 21 CFR 177.1210 (Closures with Sealing Gaskets for Food Containers) 21 CFR 175.300 (Resinous and Polymeric Coatings) |
| Drug Master File (DMF) | 2434 |
| Other Compliances | USFDA Food Allergen Guidelines; California Proposition 65 Labeling Requirements; Limitations of Heavy Metals in Packaging per CONEG & EU 94/62/EC, Article 11 |

DISTRIBUTED BY:



REF NO.:

DWG30835

DISCLAIMER
THIS INFORMATION IS PROVIDED AS A GENERAL GUIDE, INCLUDING DIMENSIONS. IT IS THE CUSTOMER'S RESPONSIBILITIES TO SELECT THE PROPER CONTAINER FOR PRODUCT AND APPLICATION COMPATIBILITY.

DESCRIPTION:

110-400 Black PP Matte Top, Ribbed Sides Cap with F217 Liner