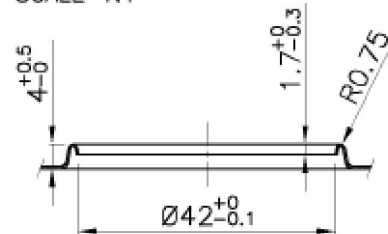


**REL HOLE PROFILE Ø42**  
SCALE 1:1



**TECHNICAL DATASHEET**

Date	09/08/2016
Article Code	S1143
Description	R108X175 H158 - It 2,5 (OMO COP) REL 42 LATERALE + MAN PLAST. NERA OMO DIL. + TT
Shape	RECTANGULAR CAN
Height(H)	158 mm
Body Type	Welded
Hole side	HOLE OPPOSITE WELDING SIDE
Approved/Validated	UN APPROVAL FOR Y1,2 (for liquid contents)
Tactile triangle	PRESENT
Weight (gr)	284,6
Drawing	GA08108175001_Can_108x175_PPG_REL42.jpg

Material	Thickness	Temper	Tin
Body	0,23	TS275 (T57 BA)	2,0 - 2,0 (Int-Est)
Bottom end	0,29	TH415 (T61 CA)	2,0 - 2,0 (Int-Est)
Lid	0,29	TH415 (T61 CA)	2,0 - 2,0 (Int-Est)

**BILL OF MATERIAL**

F0023	CORPI R108X175 H158 - It 2,5	PZ	1,0
E0018	FONDO R108X175	PZ	1,0
E0404	COP R108X175 PUNZ.OMOLOGAZIONE REL 42 LATERALE + MAN	PZ	1,0
ARAM000002	FILO DI RAME DIAM. 1,38 mm.	GR	6,5

Inside	Plain or with suitable protecting coating
Outside	Plain, lacquered or printed as per customer need
Tolerances	According to EN10202:2004



**Pipeline Packaging**

30310 Emerald Valley Pkwy  
Glenwillow, OH 44139

PPC ITEM NUMBER: 40614	SKU: 02-21-032-00166
DRAWN BY: -	CHECKED BY: -
DATE: 10/31/2018	

DESCRIPTION: 175 mm X 158 mm F-Style Can	COLOR: -
PART MATERIAL: Tin	VOLUME: -
DWG NO.:	WEIGHT: -
DWG SIZE: A	SHEET NO: 1 of 1
	REV: -

**PROPRIETARY AND CONFIDENTIAL**

THE INFORMATION CONTAINED IN THIS DRAWING IS THE SOLE PROPERTY OF PIPELINE PACKAGING. ANY REPRODUCTION IN PART OR AS A WHOLE WITHOUT THE WRITTEN PERMISSION OF PIPELINE PACKAGING IS PROHIBITED.

**UNLESS OTHERWISE SPECIFIED:**

UNITS OF MEASURE: Inches  
TOLERANCES: Specified in drawing