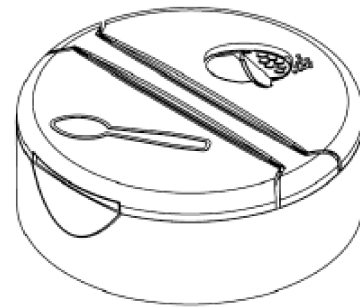
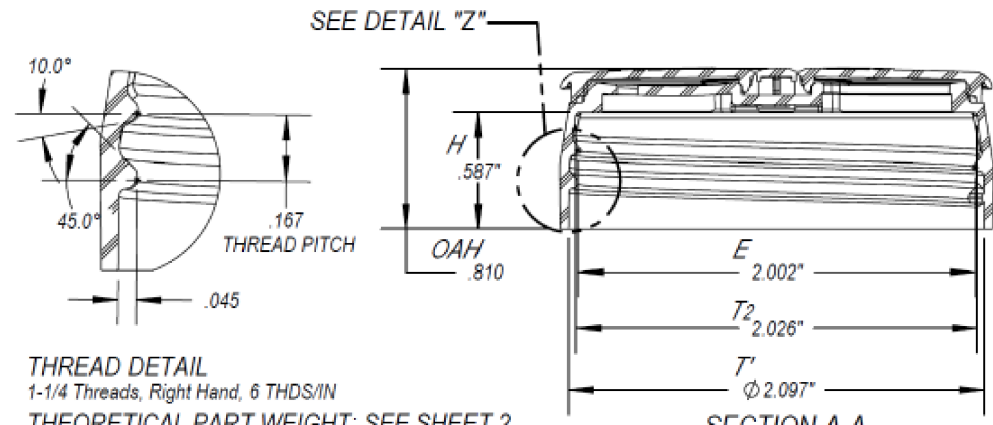




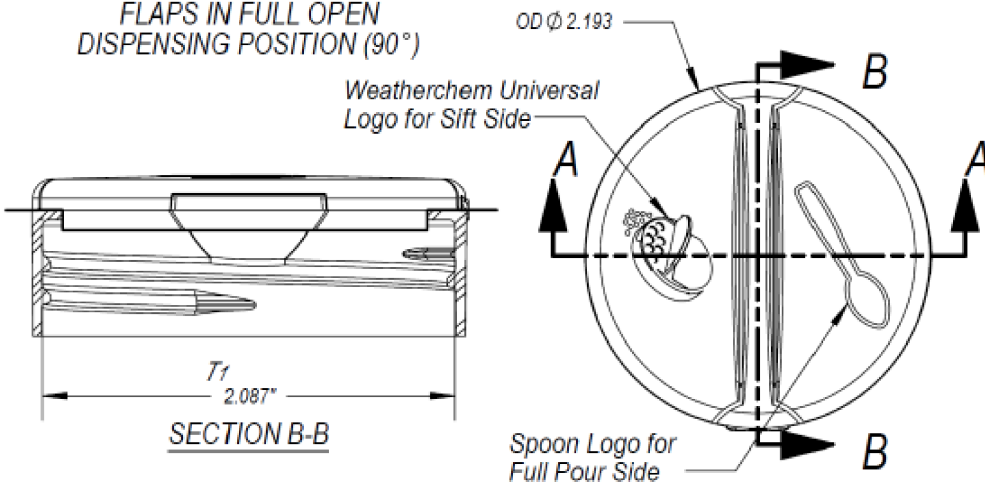
FLAPS IN FULL OPEN
DISPENSING POSITION (90°)



FLAP FULLY CLOSED



THREAD DETAIL
1-1/4 Threads, Right Hand, 6 THDS/IN
THEORETICAL PART WEIGHT: SEE SHEET 2
OPENING FORCE: 1.5-4.0 LBS



SECTION A-A

53mm-485 SR11 Dual Flapper

MATERIAL: POLYPROPYLENE

BOTTLE FINISH: 485
FITS MOST C.M.A. BOTTLE
FINISHES

TORQUE RECOMMENDATION:
21-36 IN-LBS. THIS REQUIREMENT
MAY VARY DEPENDING UPON
BOTTLE MATERIAL, NECK FINISH,
AND CAPPING EQUIPMENT.

S.P.I. OR G.B.I. STANDARD
BOTTLE FINISHES.



Pipeline Packaging

30310 Emerald Valley Pkwy
Glenwillow, OH 44139

PPC ITEM NUMBER: 71529	SKU: 05-16-019-00202
DRAWN BY:	CHECKED BY:
	DATE: 2/14/2019

DESCRIPTION: 58-485 Cont. Thread PP Closure	COLOR: -
PART MATERIAL: -	VOLUME: -
WEIGHT: -	
DWG NO.:	DWG SIZE: A
SHEET NO: 1 of 1	REV: -

PROPRIETARY AND CONFIDENTIAL

THE INFORMATION CONTAINED IN THIS DRAWING IS THE SOLE PROPERTY OF PIPELINE PACKAGING. ANY REPRODUCTION IN PART OR AS A WHOLE WITHOUT THE WRITTEN PERMISSION OF PIPELINE PACKAGING IS PROHIBITED.

UNLESS OTHERWISE SPECIFIED:

UNITS OF MEASURE: Inches
TOLERANCES: Specified in drawing