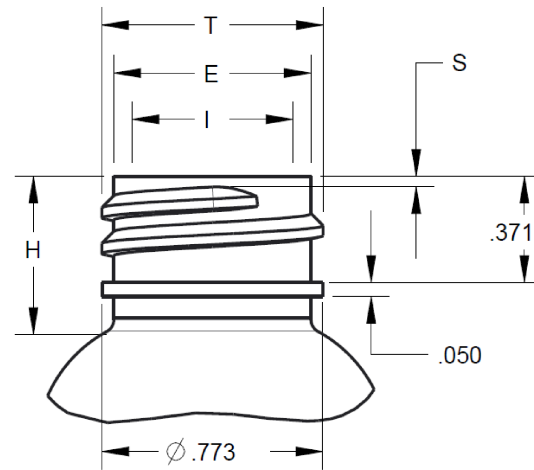
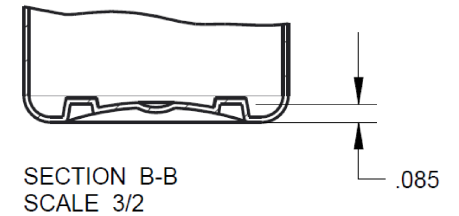


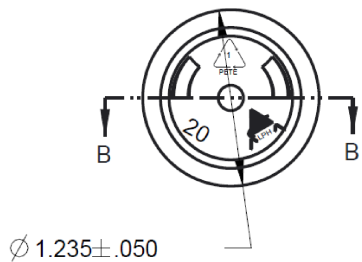
T = .775±.008  
 E = .691±.008  
 H = .554±.015  
 I = .404 MIN  
 S = .037±.015



DETAIL A  
 8 T.P.I.  
 1-1/2 THREAD TURNS  
 SCALE 2/1



NOTE:  
 CLOSURES WITH MORE THAN 1 1/2 TURNS OF THREAD MAY  
 INTERFERE WITH BEAD, WHICH ALSO MAY RESULT IN AN  
 IMPROPER SEAL AT LAND AREA.



NOTES

1. WEIGHT - 9.5 ± 1 gram
2. OVERFLOW CAPACITY - 84.5 ± 3.5 ml
3. MINIMUM WALL THICKNESS - .008"

**DISCLAIMER**

THIS INFORMATION IS PROVIDED AS A GENERAL GUIDE, INCLUDING  
 DIMENSIONS. IT IS THE CUSTOMER'S RESPONSIBILITIES TO SELECT  
 THE PROPER CONTAINER FOR PRODUCT AND APPLICATION  
 COMPATIBILITY.

DISTRIBUTED BY:



REF NO.:

DWG10371

DESCRIPTION:

2 oz PET Cosmo Round, 20-410