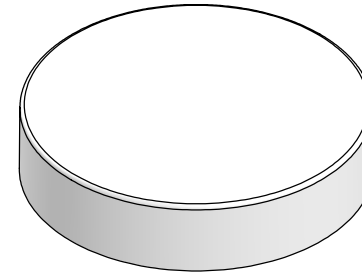


SECTION A-A

THREAD DETAIL
 0.167 [4.24] PITCH
 6 THREADS PER INCH



SCALE 1:1

	TOLERANCE	UNITS	
E	±0.010 [0.25]	in [mm]	1.788 [45.42]
T	±0.010 [0.25]	in [mm]	1.880 [47.75]
H	±0.010 [0.25]	in [mm]	0.390 [9.91]
OAH	±0.010 [0.25]	in [mm]	0.440 [11.18]
BOTTOM OD	±0.010 [0.25]	in [mm]	1.980 [50.29]
PART WEIGHT	±1.0	g	3.8

DISCLAIMER

THIS INFORMATION IS PROVIDED AS A GENERAL GUIDE, INCLUDING DIMENSIONS. IT IS THE CUSTOMER'S RESPONSIBILITIES TO SELECT THE PROPER CONTAINER FOR PRODUCT AND APPLICATION COMPATIBILITY.

DISTRIBUTED BY:



REF NO.:

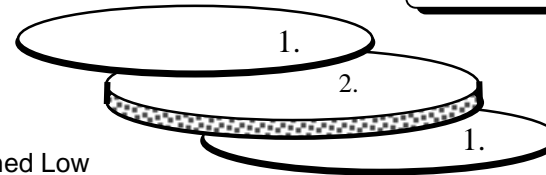
DWG30457

DESCRIPTION:

48-400 White PP Smooth Top, Smooth Sides Cap with F217 Liner

TECHNICAL DATA SHEET


F- 217



Description: Three -ply co-extruded material; Foamed Low Density Polyethylene Core (2.) Between Two Solid Layers Of Low Density Polyethylene (1.).

SPECIFICATIONS

Thickness			Available Web Width		
Minimum In (mm)	Maximum In (mm)	Deviation In (mm)	Minimum In (mm)	Maximum In (mm)	Deviation In (mm)
0.020 (0.51)	0.060 (1.52)	+/-0.005 (0.127)	1.0 (25.4)	25.0 (635.0)	+/-1/16 (1.6)
0.065 (1.65)	0.090 (2.29)	+/-0.007 (0.178)	1.0 (25.4)	9.00 (228.6)	+/-1/16 (1.6)
0.095 (2.41)	0.125 (3.18)	+/-0.010 (0.254)	1.0 (25.4)	9.00 (228.6)	+/-1/16 (1.6)

<p><u>DISCLAIMER</u></p> <p>THIS INFORMATION IS PROVIDED AS A GENERAL GUIDE, INCLUDING DIMENSIONS. IT IS THE CUSTOMER'S RESPONSIBILITIES TO SELECT THE PROPER CONTAINER FOR PRODUCT AND APPLICATION COMPATIBILITY.</p>	<p>DISTRIBUTED BY: </p>	<p>REF NO.: DWG30457</p>
	<p>DESCRIPTION: 48-400 White PP Smooth Top, Smooth Sides Cap with F217 Liner</p>	