

Picture(s) of Drum



Specific Manufacturing

Line: Raw Materials	
Resin L99 / 80100001 HDPE Resin	Color# (wt%) L93 / 80200005 (.4%)
Specific Resin(s) PCP99-4 / 80150006 PCR Resin - #9 ONLY	Color Description WHITE

Embossments

<p>Regulatory</p> <p>1. MACHINE #5 OR #6 1H1/Y1.9/100/**/USA/M4235 2.2MM</p> <p>2. MACHINE #5 OR #6 1H1/Y1.9/150/**/USA/M4235 2.2MM</p> <p> 1H1/Y1.4/100/**/USA/M4235 2.2MM WITH VENTED CLOSURE ** Last two digits of current year</p>	<p>Custom DRUMS MADE ON LINE 9:</p> <p>1H1W/Y1.9/100/** USA/M4235 2.2mm</p> <p>1H1W/Y1.4/100/** USA/M4235 2.2mm WITH VENTED CLOSURE</p> <p>** Last two digits of current year</p>
---	---

Specific Comments

Weight Target: 20.80
 Height: 34.50-35.00
 Diameter: 23.14-23.39

Bung Opening 1 = 2" NPT



L16-WL / 81630002: 2" Natural Solid NPT Plug & EPDM Gasket

Capseal 1	Weepholes Required? YES
N/A	Bag Part #: N/A
	Label Part # (Placement): N/A

Bung Opening 2 = 2" BUTTRESS



L10-WL / 81630001: 2" Natural Solid Buttress Plug & EPDM Gasket

Capseal 2	Stencil # (Placement): N/A
N/A	Pallet Part #: N/A
	Pallet Arrangement: N/A

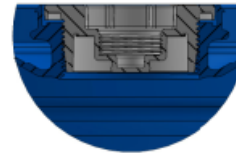
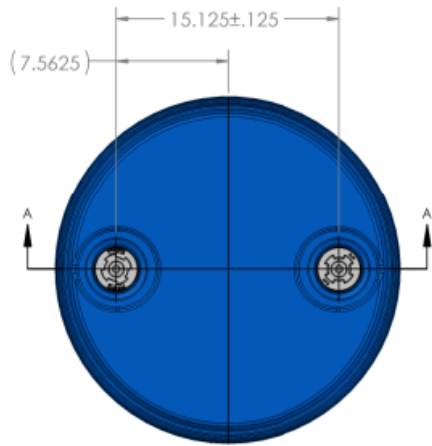
DISCLAIMER

THIS INFORMATION IS PROVIDED AS A GENERAL GUIDE, INCLUDING DIMENSIONS. IT IS THE CUSTOMER'S RESPONSIBILITIES TO SELECT THE PROPER CONTAINER FOR PRODUCT AND APPLICATION COMPATIBILITY.

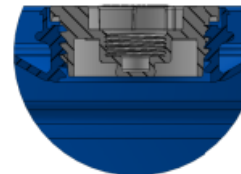
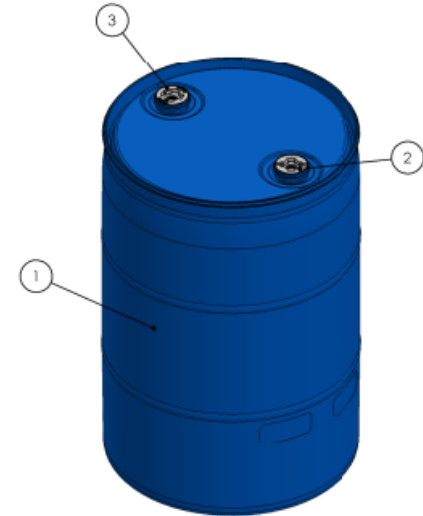
DISTRIBUTED BY: Pipeline Packaging

REF NO.:
DWG30481

DESCRIPTION:
55 Gallon White Plastic Tight Head Drum, 2 in Fittings

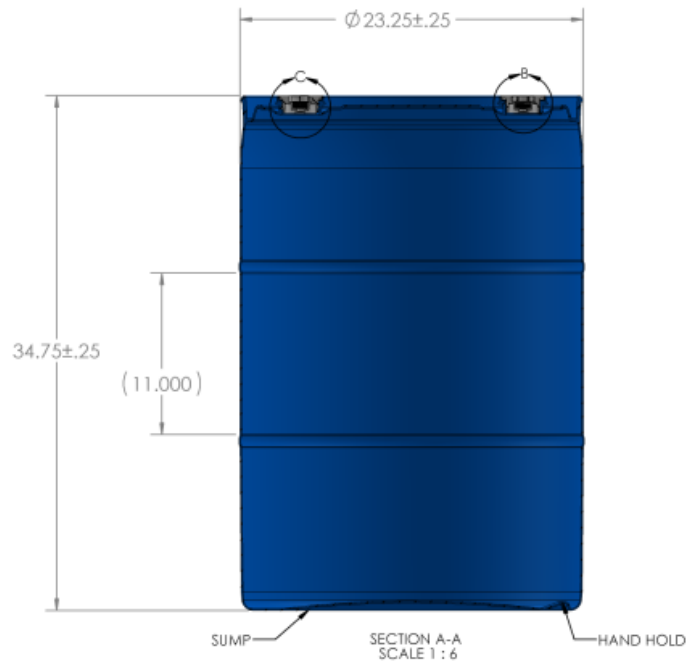


DETAIL B
SCALE 1 : 1.5
2" NPS CLOSURE



DETAIL C
SCALE 1 : 1.5
2" BUTTRESS CLOSURE

ITEM NO.	PART NUMBER	DESCRIPTION	QTY.
1	412-82-C-02	55 GAL. L1 DRUM	1
2	L16-WLXX	2" NPS PLUG	1
3	L10-WLXX	2" BUTTRESS PLUG	1



DISCLAIMER

THIS INFORMATION IS PROVIDED AS A GENERAL GUIDE, INCLUDING DIMENSIONS. IT IS THE CUSTOMER'S RESPONSIBILITIES TO SELECT THE PROPER CONTAINER FOR PRODUCT AND APPLICATION COMPATIBILITY.

DISTRIBUTED BY:



REF NO.:

DWG30481

DESCRIPTION:

55 Gallon White Plastic Tight Head Drum, 2 in Fittings