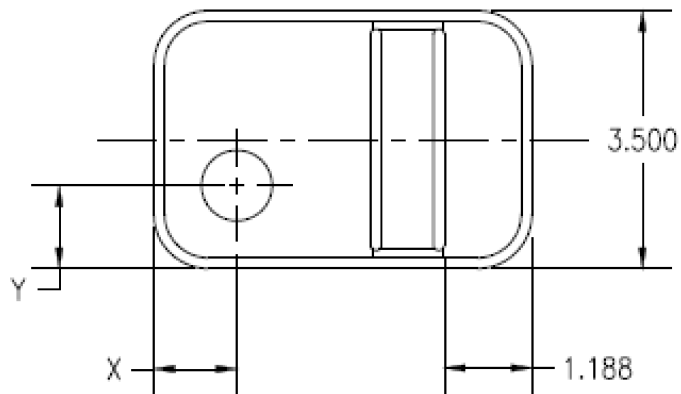


NOZZLE SIZE & TYPE	X	Y
.954 MAGENTA (TOP END OPENING)	1.063	1.063
1-1/4" ALPHA	1.125	1.125
32mm METRIC DIN	1.188	1.188
32mm REL	1.188	1.188



Body: 90 # .20ETP Bright Plate
Welded Side Seam
Plain or Lithographed

Ends: 90 # .20 ETP Bright Plate

DISCLAIMER

THIS INFORMATION IS PROVIDED AS A GENERAL GUIDE, INCLUDING DIMENSIONS. IT IS THE CUSTOMER'S RESPONSIBILITIES TO SELECT THE PROPER CONTAINER FOR PRODUCT AND APPLICATION COMPATIBILITY.

DISTRIBUTED BY:



REF NO.:

DWG10090

DESCRIPTION:

1/2 Gallon F-Style Can, 502x718