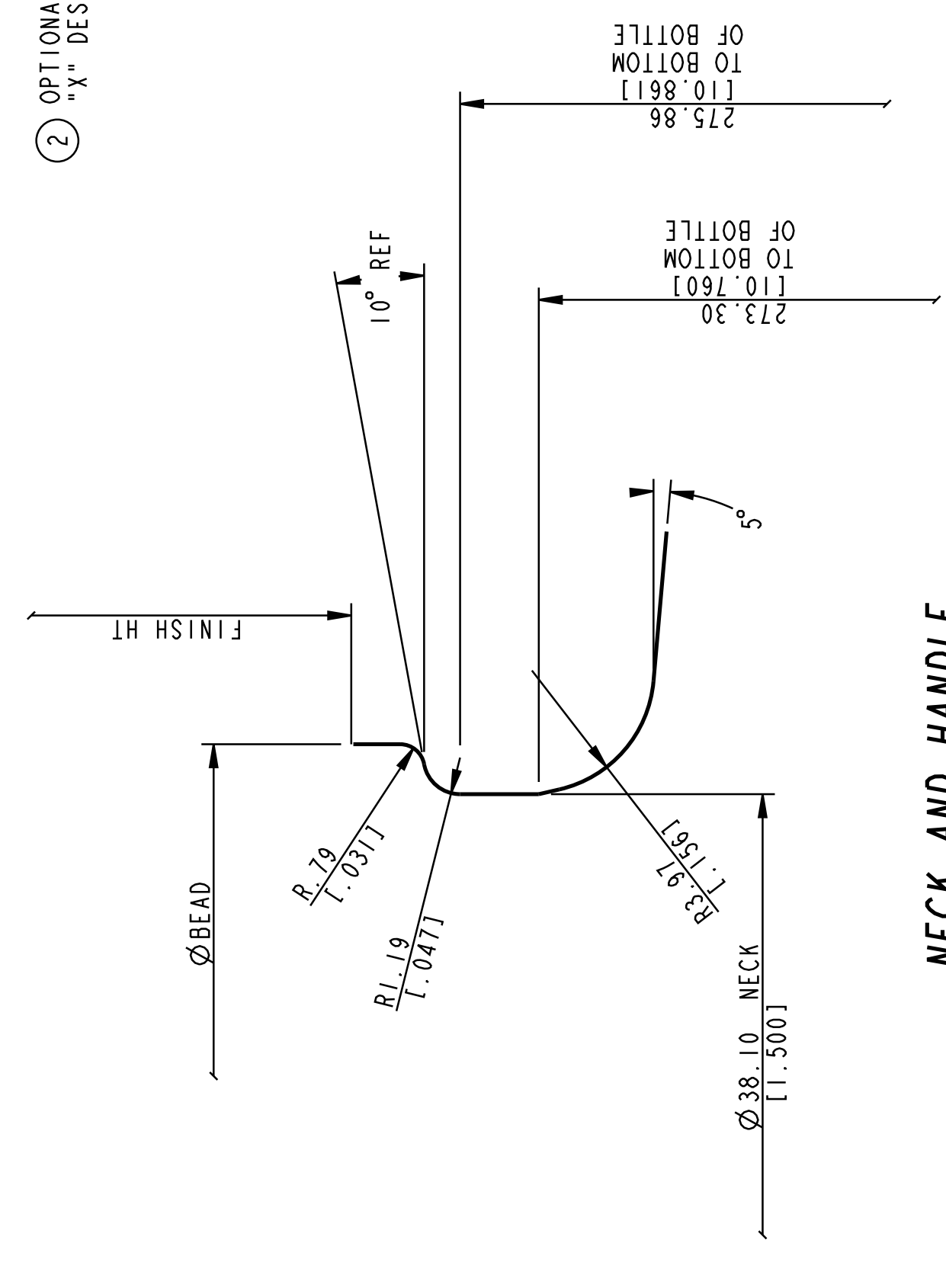
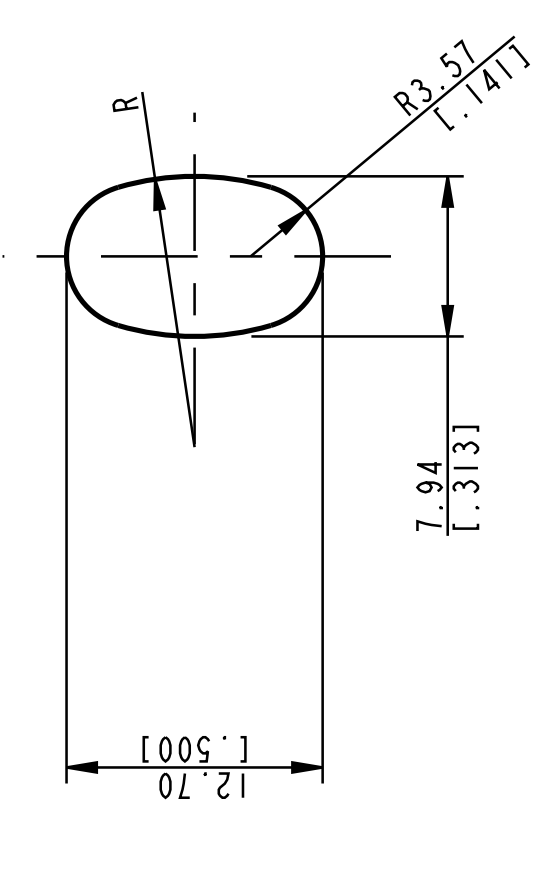


SECTION A-A  
SCALE 2.000



NECK AND HANDLE  
DETAIL  
SCALE 4.000



SECTION THRU HANDLE  
SCALE 2.000

SHOULDER CAPACITY LETTERING TO APPEAR ON BOTH SIDES AS SHOWN, AND TO BE 9.53 (1.375) TALL.  
C.I.D. DOT CODE AND CAVITY NUMBER TO APPEAR ON HEEL. CAVITY NUMBER TO BE 6.00 (1.236) TALL.  
HEEL LETTERING TO APPEAR ON SIDE OPPOSITE C.I.D. DOT CODE, AND TO BE 5.00 (1.917) TALL.

- OPTIONAL: BOTTOM PLATE: CAVITY NUMBER TO BE 8.00 (1.314) TALL
- OPTIONAL: C.I.D. RINGS TO APPEAR ON BOTTOM
- CRESCENT KNURLING TO APPEAR ON BEARING SURFACE.
- OPTIONAL: "X" DESIGNS TO APPEAR ON BEARING SURFACE.

CONTAINER IS NOT INTENDED FOR USE WITH HAZARDOUS MATERIAL SHIPMENT PACKAGES THAT REQUIRE HYDROSTATIC PRESSURE TESTING, I.E., CFR 49.173.27.  
THIS ITEM IS C-8172 MOLD EQUIPMENT, AND IS FOR DAC END USE.  
SEE C-8172 FOR FOOD END USE.

<b>CONTAINER OVERFLOW CAPACITY (BRIMFUL)</b>	
3933.28 ml ± 29.57 ml	
[133.000 FL OZ ± 1.000 FL OZ]	
<b>CONTAINER RATED CAPACITY (FILLPOINT)</b>	
0.00 ml	
[0.000 FL OZ]	
<b>CONTAINER WEIGHT</b>	
1190.88 g ± 49.61 g	
[42.000 OZ ± 1.750 OZ]	
<b>FINISH DESIGNATION</b>	<b>MAX GAS VOLUME</b>
038-0405-R561	0.0 Gas Vol
<b>PROCESS</b>	<b>RETURNABLE</b>
B4B3	NO
	<b>DESIGN REF.</b>

**DISCLAIMER**

THIS INFORMATION IS PROVIDED AS A GENERAL GUIDE, INCLUDING DIMENSIONS. IT IS THE CUSTOMER'S RESPONSIBILITIES TO SELECT THE PROPER CONTAINER FOR PRODUCT AND APPLICATION COMPATIBILITY.

DISTRIBUTED BY: Pipeline Packaging

REF NO.: DWG30641

DESCRIPTION: 128 oz Amber Jug, 38-400