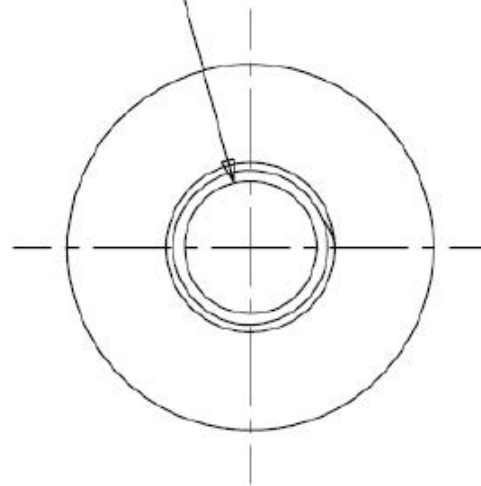


.516 MIN. I.D.
 .050 MIN. LAND



NOTES :

- 1) OVERFLOW CAPACITY : 10.48 ± .30 FL.OZ.
 (310.0 ± 9.0 CC'S.)
- 2) WEIGHT : 26.0 ± 2.0 GRAMS

DISCLAIMER

THIS INFORMATION IS PROVIDED AS A GENERAL GUIDE, INCLUDING DIMENSIONS. IT IS THE CUSTOMER'S RESPONSIBILITIES TO SELECT THE PROPER CONTAINER FOR PRODUCT AND APPLICATION COMPATIBILITY.

DISTRIBUTED BY:



REF NO.:

DESCRIPTION: