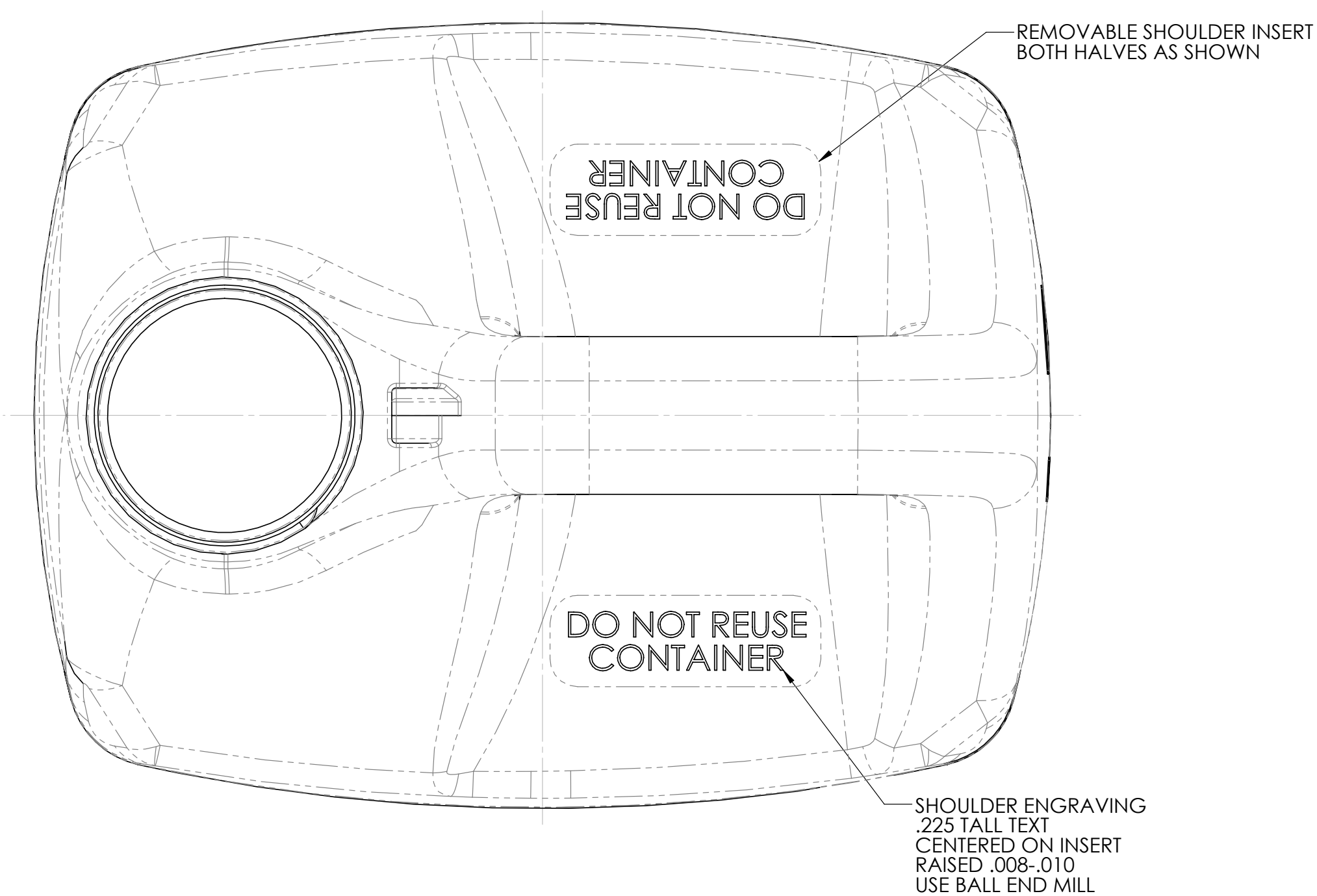
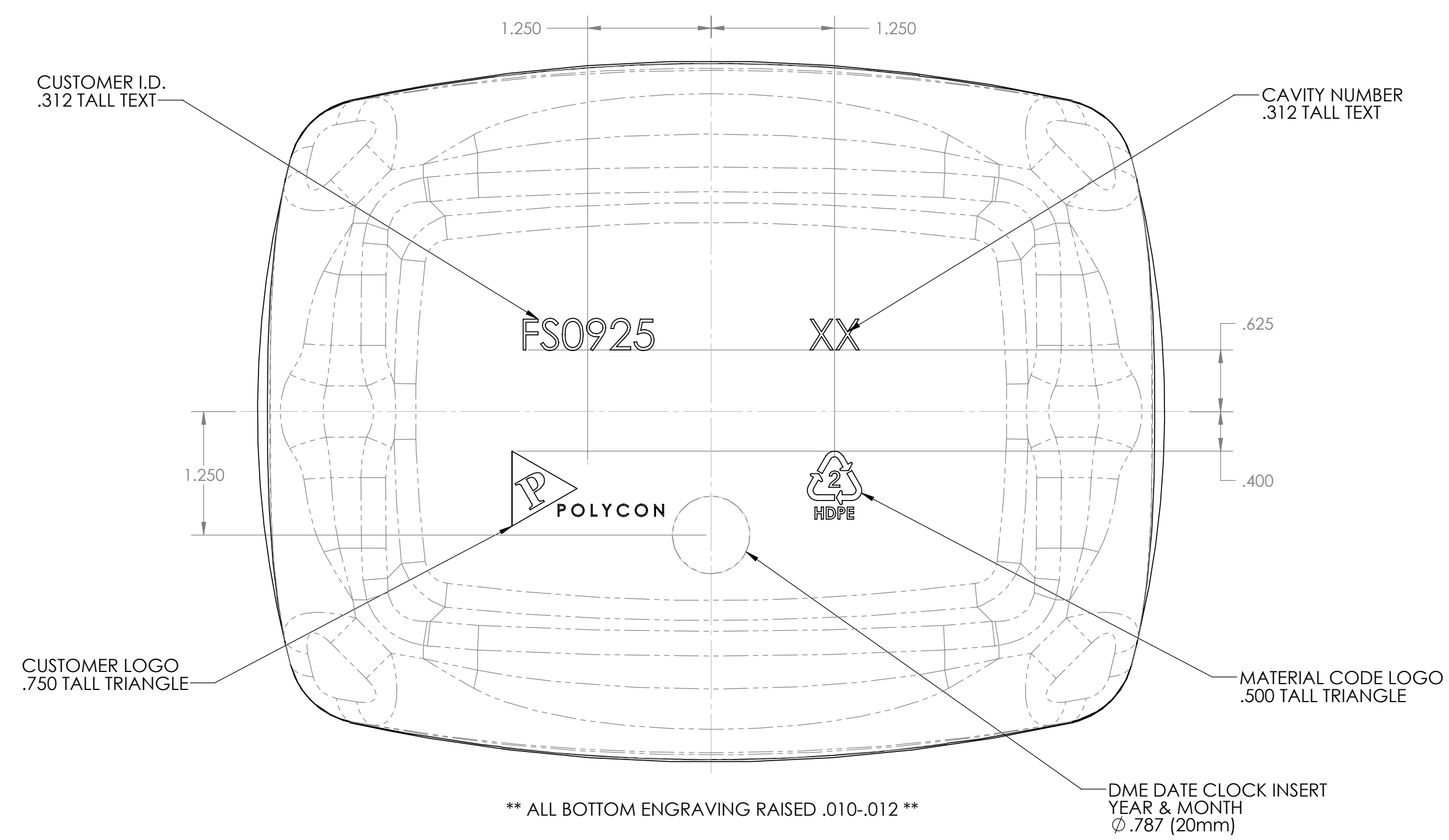


THREAD NOTES:
1. CUSTOM THREAD PROFILE
2. THREAD START 55° FROM P/L IN BUSHING HALF
3. 2.097 (75S) 1 TURNS OF THREAD
4. FITCH = .167



DISCLAIMER

THIS INFORMATION IS PROVIDED AS A GENERAL GUIDE, INCLUDING DIMENSIONS. IT IS THE CUSTOMER'S RESPONSIBILITIES TO SELECT THE PROPER CONTAINER FOR PRODUCT AND APPLICATION COMPATIBILITY.

DISTRIBUTED BY:



REF NO.:

DWG30716

DESCRIPTION:

2.5 Gallon Natural HDPE F-style Rectangular Bottle, 2x1, Kraft Box, 63 mm Neck Finish