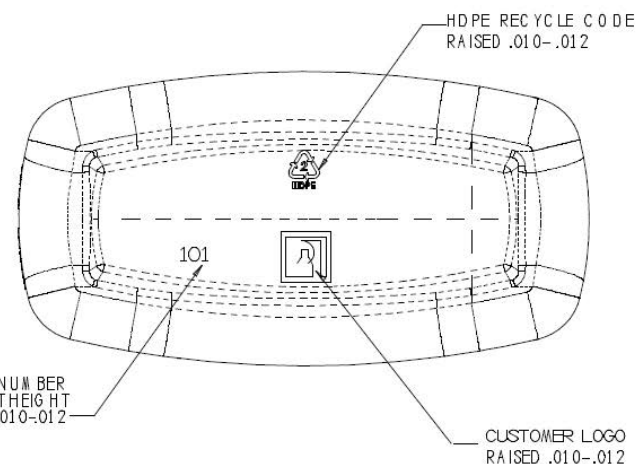
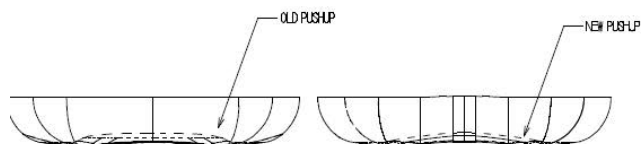


38mm REKA NBO NECK DETAIL
(PER REKA # SPEC # 6961H)

- 1) THREAD START 45° FROM PL IN PIN HALF
- 2) 1.5 TURNS (540°) OF THREAD
- 3) PITCH = .167"
- 4) 6 THREADS PER INCH

VOLUMETRIC ENGRAVING
200 TALL TEXT
CENTERED ON MARK
RAISED .008-.010
LOCATIONS T.B.D.



DISCLAIMER

THIS INFORMATION IS PROVIDED AS A GENERAL GUIDE, INCLUDING DIMENSIONS. IT IS THE CUSTOMER'S RESPONSIBILITIES TO SELECT THE PROPER CONTAINER FOR PRODUCT AND APPLICATION COMPATIBILITY.

DISTRIBUTED BY:



REF NO.:

DESCRIPTION: