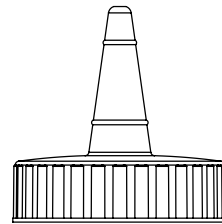
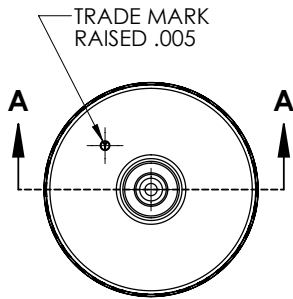
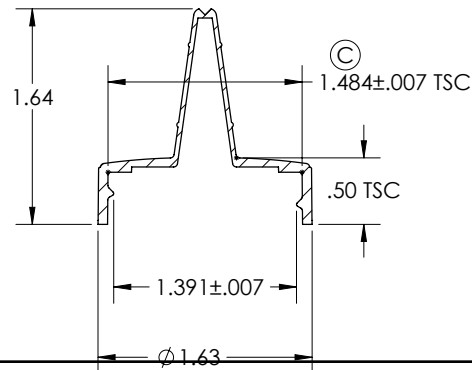


## SPOUT

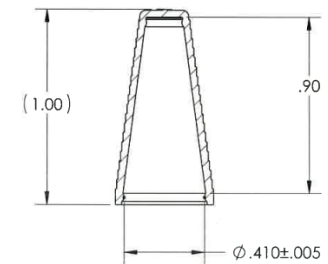


**ACTUAL SIZE**  
(MAY VARY DUE TO PRINTER SETUP AND PAPER SIZE)



**SECTION A-A**

## CAP



**SECTION A-A**

### NOTES:

1. TORQUE SPEC. TIGHTENING FORCE 17-26 IN-LBS
2. SURFACE FINISH: SPE SPI#3
3. MATERIAL: MEDIUM DENSITY POLYETHYLENE
4. COLOR: AS ORDERED
5. HOLE SIZES AVAILABLE: .030, .055, .090 OR NO HOLE AS SHOWN
6. THREAD SPEC.: YORKER BUTTRESS FORM 1 3/8 TURNS OF FULL THD.

### DISCLAIMER

THIS INFORMATION IS PROVIDED AS A GENERAL GUIDE, INCLUDING DIMENSIONS. IT IS THE CUSTOMER'S RESPONSIBILITIES TO SELECT THE PROPER CONTAINER FOR PRODUCT AND APPLICATION COMPATIBILITY.

DISTRIBUTED BY:



REF NO.:

DWG30802

DESCRIPTION:

38-400 Natural LDPE Spout Cap with Long Red Tip (No Hole)