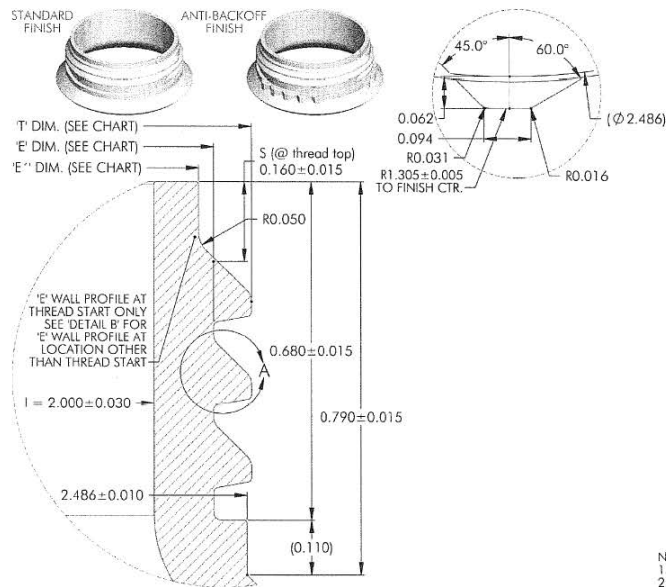
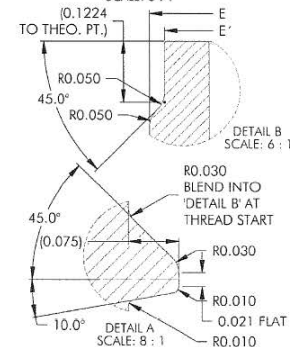


NOTES: (UNLESS OTHERWISE SPECIFIED)  
 1. ALL DIMENSIONS ARE IN INCHES.  
 2. TOLERANCE ON ALL DIMENSIONS IS  $\pm 0.010$ .  
 3. CONTINUOUS RUN OF THREAD FROM LINER-WELL TO S-2 DIMENSION SHOWN AT BOTTOM OF SKIRT. (2 FULL TURNS)



RATCHET DETAIL (SEE NOTE 4)  
 GROUPS OF 5 RATCHETS, 15° BETWEEN RATCHETS  
 SCALE: 6 : 1



MATERIAL	T (mean)	E (mean)	E' (mean)	TOLERANCE
PP / PE	2.505	2.355	2.295	+0.017/-0.018
PET	2.505	2.355	2.295	$\pm 0.010$

NOTES: (UNLESS OTHERWISE SPECIFIED)  
 1. ALL DIMENSIONS ARE IN INCHES.  
 2. SEE CHART FOR TOLERANCE ON ALL DIMENSIONS.  
 3. THIS FINISH IS DESIGNED FOR USE WITH ALL PHOENIX 63-501-XXXX CLOSURES EXCEPT FOR 63-501-2002.  
 4. RATCHETS USED w/ ANTI-BACKOFF STYLE ONLY. THIS FEATURE NOT INCLUDED w/ STD FINISH. MAY ALTER GROUP POSITION FOR EASE OF MOLDING BUT RATCHETS MUST REMAIN IN GROUPS OF 5 AS DEPICTED ON PRINT.

#### DISCLAIMER

THIS INFORMATION IS PROVIDED AS A GENERAL GUIDE, INCLUDING DIMENSIONS. IT IS THE CUSTOMER'S RESPONSIBILITIES TO SELECT THE PROPER CONTAINER FOR PRODUCT AND APPLICATION COMPATIBILITY.

DISTRIBUTED BY:



REF NO.:

DESCRIPTION: