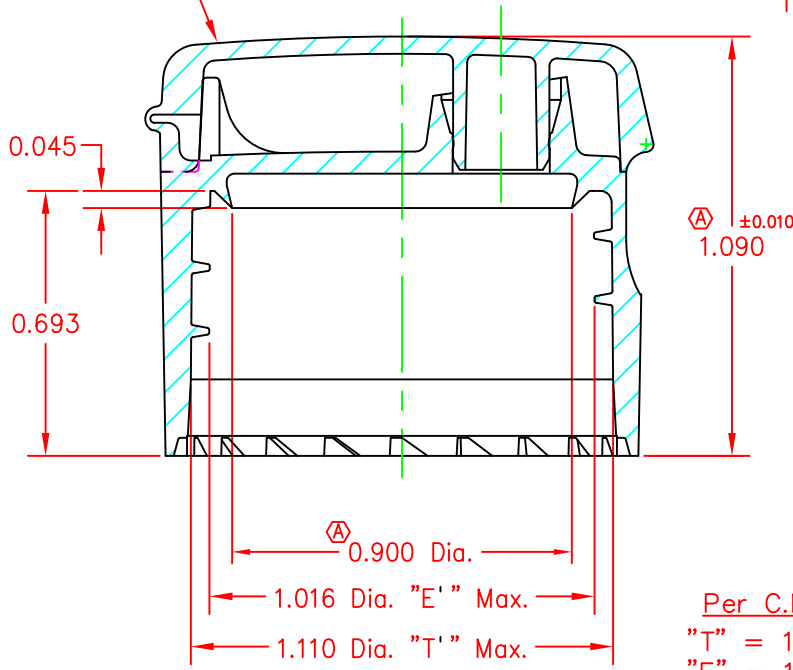
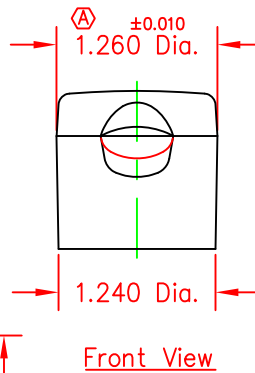
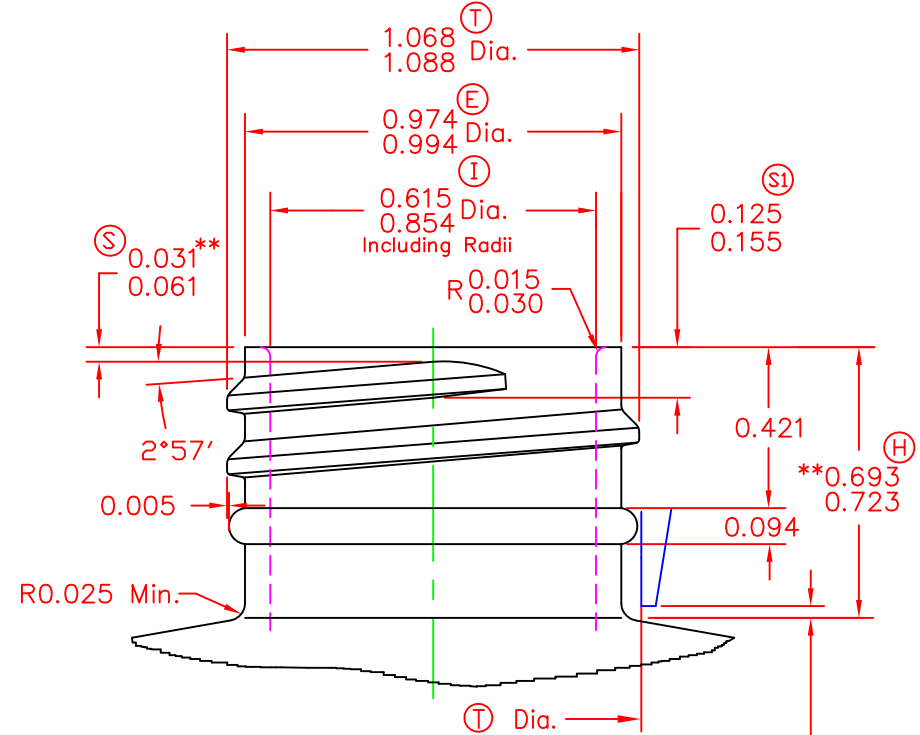


1.062 Dia. Logo/Engraving Inserts  
Available on top of  
Closure for Custom  
Applications



Per C.M.A. Standard  
"T" = 1.103/1.089 Dia.  
"E" = 1.009/0.995 Dia.



\*\* Bottle "H" Dim. Creates a  
Cap Skirt-Bottle Shoulder  
Clearance Of .015" To .061"  
This can be adjusted to Suit  
Aesthetic Requirements  
(Min. Functional "H" .678")

- BOTTLE NOTES:
- 1) Thread: 6 Pitch, Per S.P.I. Standard.
  - 2) Diameters must be concentric within .015" T.I.R.
  - 3) All Dimensions are in inches unless otherwise indicated.

Ⓟ  
Dimensions marked \* are an average of two measurements taken 90° apart.  
GENERAL TOLERANCE NOT SHOWN OTHERWISE: ± .008

<b>DISCLAIMER</b>	DISTRIBUTED BY:	REF NO.:
	DESCRIPTION: 28-410 White PP Smooth Top, Smooth Sides Fip Top Cap with ISPE U10 Heat Seal Liner	DWG30848

THIS INFORMATION IS PROVIDED AS A GENERAL GUIDE, INCLUDING DIMENSIONS. IT IS THE CUSTOMER'S RESPONSIBILITIES TO SELECT THE PROPER CONTAINER FOR PRODUCT AND APPLICATION COMPATIBILITY.

<b>Product</b>	ISPE U10																			
<b>Scope</b>	One piece foam backed heat induction foil innerseal that will provide a tamper evident welded seal to PE containers.																			
<b>Composition</b>	<table border="1"> <thead> <tr> <th>Material</th> <th>Standard</th> <th>Metric</th> </tr> </thead> <tbody> <tr> <td>PET Film</td> <td>0.0005"</td> <td>0.013mm</td> </tr> <tr> <td>Polyolefin Foam</td> <td>0.009"</td> <td>0.229mm</td> </tr> <tr> <td>Foil</td> <td>0.001"</td> <td>0.025mm</td> </tr> <tr> <td>PET Film</td> <td>0.0005"</td> <td>0.013mm</td> </tr> <tr> <td>Heat Seal</td> <td>0.0015"</td> <td>0.038mm</td> </tr> </tbody> </table>	Material	Standard	Metric	PET Film	0.0005"	0.013mm	Polyolefin Foam	0.009"	0.229mm	Foil	0.001"	0.025mm	PET Film	0.0005"	0.013mm	Heat Seal	0.0015"	0.038mm	<p>The diagram shows a cross-section of the innerseal assembly. From top to bottom, the layers are: a green PET Film layer, a pink Polyolefin Foam layer, a purple Foil layer, another green PET Film layer, and a blue Heat Seal layer. Below these is a blue heat seal liner. A dashed line indicates the assembly is part of a larger container structure.</p>
Material	Standard	Metric																		
PET Film	0.0005"	0.013mm																		
Polyolefin Foam	0.009"	0.229mm																		
Foil	0.001"	0.025mm																		
PET Film	0.0005"	0.013mm																		
Heat Seal	0.0015"	0.038mm																		
<small>Composition does not include adhesive, resin or wax bonding layers (if any).</small>																				
<b>FDA Status:</b> 21 CFR 177.1210		<b>Recommended Storage and Handling:</b> Refer to website																		
<b>Drug Master File (DMF):</b> 11485		<b>EU / EP Reg.:</b>																		
<b>GTR Oxygen:</b> Essentially zero		<b>MVTR:</b> Essentially zero																		
<b>Print Location (if any):</b> Top layer of PET film																				

**DISCLAIMER**

THIS INFORMATION IS PROVIDED AS A GENERAL GUIDE, INCLUDING DIMENSIONS. IT IS THE CUSTOMER'S RESPONSIBILITIES TO SELECT THE PROPER CONTAINER FOR PRODUCT AND APPLICATION COMPATIBILITY.

DISTRIBUTED BY:	REF NO.: DWG30848
DESCRIPTION: 28-410 White PP Smooth Top, Smooth Sides Fip Top Cap with ISPE U10 Heat Seal Liner	