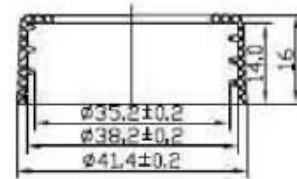
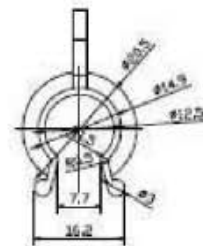
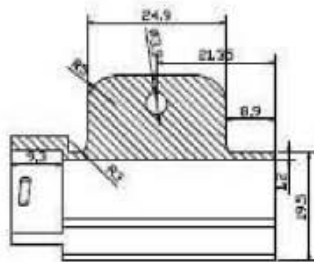
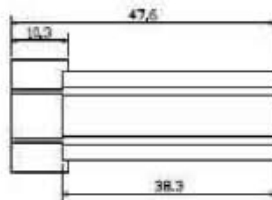


CLIP #160102



38-400
P=4,23mm



7	CYLINDER	PP			
6	CLOSURE	PP	13	TUBE	PE
5	GASKET	PE FOAM	12	BALL VALVE	S.S.#304
4	COLLAR	PP	11	VALVE BASE	HDPE
3	PLUNGER	PP	10	SPRING	S.S.#304
2	BALL VALVE	S.S.#304	9	PISTON	LDPE
1	ACTUATOR	PP	8	INNER CLIP	PP
NUMBER	PRODUCTOR NAME	MATERIAL	NUMBER	PRODUCTOR NAME	MATERIAL

DISCLAIMER

THIS INFORMATION IS PROVIDED AS A GENERAL GUIDE, INCLUDING DIMENSIONS. IT IS THE CUSTOMER'S RESPONSIBILITIES TO SELECT THE PROPER CONTAINER FOR PRODUCT AND APPLICATION COMPATIBILITY.

DISTRIBUTED BY:



REF NO.:

DESCRIPTION: