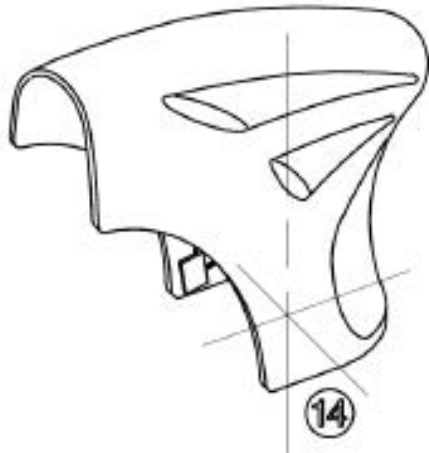
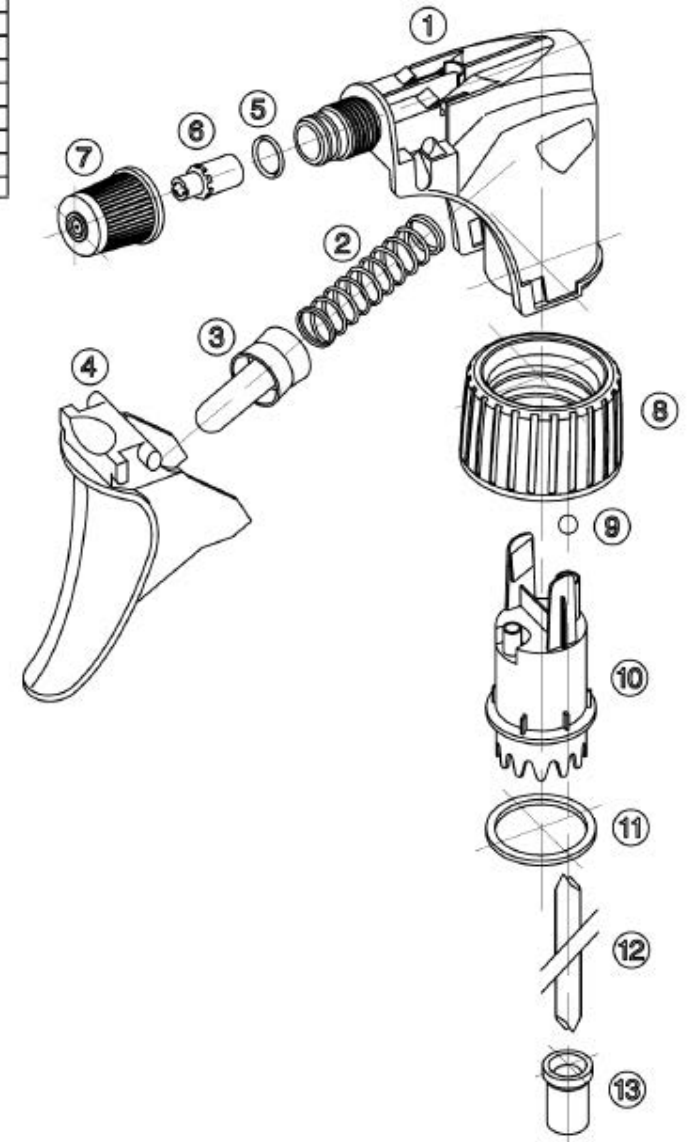


VELA LOCK CAP - Trigger Sprayer

Pos.	Description	Material	Weight [g]
1	BODY (CORPO)	PP	10.08
2	SPRING (MOLLA)	INOX Stainless Steel	1.37
3	PISTON (GOMMINO)	PE	0.81
4	TRIGGER (LEVA)	PP	3.60
5	O-RING (GUARNIZIONE)	NBR	0.08
6	SPINNER VALVE (ROMPIGETTO)	POM (PP)	0.31 (0.21)
7	NOZZLE (GHIERA SPRUZZO)	PP	0.87
8	LOCK CAP (GHIERA FLACONE)	PP	4.25
9	BALL VALVE (SFERA)	INOX Stainless Steel	0.13
10	CONNECTION (CONO)	PP	2.87
11	GASKET	PE/EPE	0.10
12	DIP TUBE (CANNA)	PE	2.62(x)
13	FILTER (FILTRO)	PP	0.37
14	SHROUD (CALOTTA)	PP	6.18



Notes:
 (*) This weight refers to a dip tube 208 mm length
 Questo peso si riferisce ad un pescante lungo 208 mm

DISCLAIMER

THIS INFORMATION IS PROVIDED AS A GENERAL GUIDE, INCLUDING DIMENSIONS. IT IS THE CUSTOMER'S RESPONSIBILITIES TO SELECT THE PROPER CONTAINER FOR PRODUCT AND APPLICATION COMPATIBILITY.

DISTRIBUTED BY:



REF NO.:

DESCRIPTION: