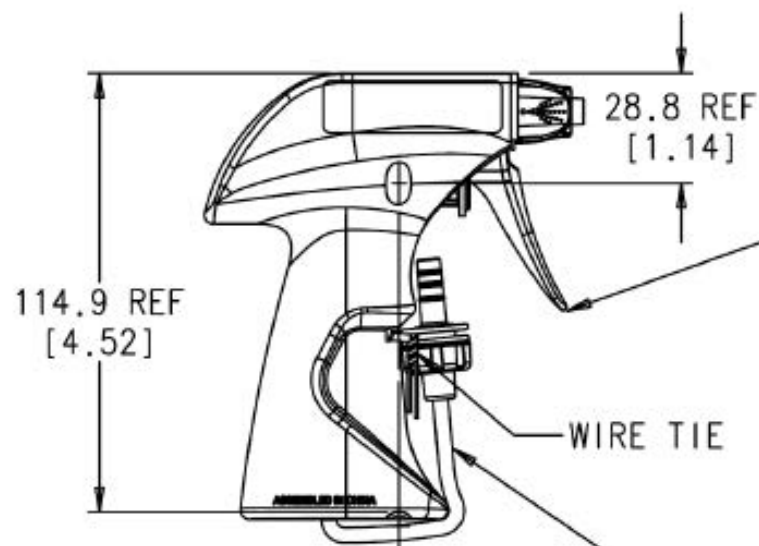


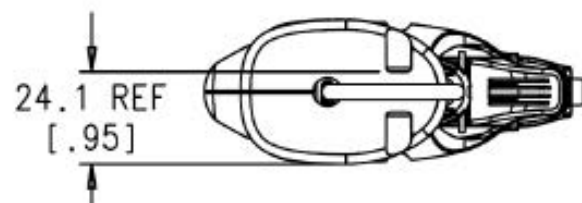
SPRAYER ASSEMBLY

- 1.3 OR 1.6 CC
OUTPUT PER STROKE
- BALL VALVE (CELCON)
- SPRING (SS)
- VALVE BODY (PP)
- PISTON (HDPE)
- SHELLS (PP)
- TRIGGER (PP)
- NOZZLE -3B (HDPE)
- SPIN MECHANICS (PPCO)



NOTES:

1. DUAL DIMENSION FORMAT: MILLIMETERS[INCHES].
2. DIMENSIONS SHOWN ARE FOR REFERENCE ONLY FROM CAD DATA AND MAY NOT REFLECT CURRENT MANUFACTURING DIMENSIONS AND TOLERANCES.
3. DRAWING IS PROVIDED FOR REFERENCE ONLY AND MAY CHANGE WITHOUT NOTIFICATION.



TUBE ASSEMBLY

- TUBING 1M (PVC)
- CONNECTOR (PP)
- RETAINER (PP)

DISCLAIMER

THIS INFORMATION IS PROVIDED AS A GENERAL GUIDE, INCLUDING DIMENSIONS. IT IS THE CUSTOMER'S RESPONSIBILITIES TO SELECT THE PROPER CONTAINER FOR PRODUCT AND APPLICATION COMPATIBILITY.

DISTRIBUTED BY:



REF NO.:

DESCRIPTION: