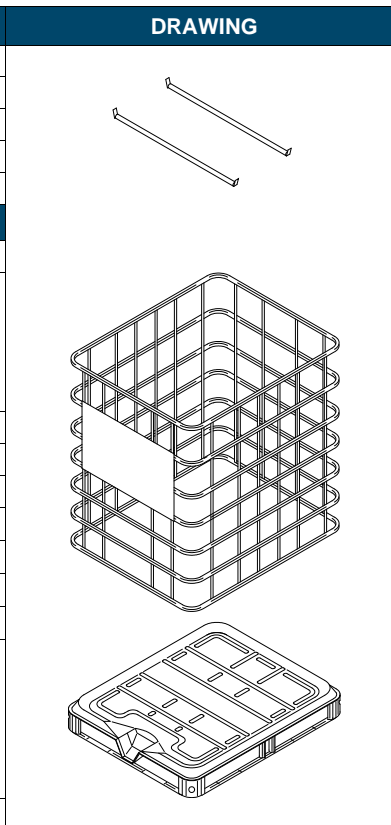

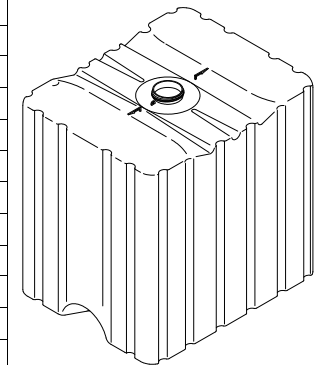


SUPPORT BARS	
Material:	Galvanized Steel Tubular Support Bars
Tare Weight:	420 Grams
Length:	38-1/4"
Attachment Method:	(2) Star Head Screws Per Bar
CAGE	
Description:	Steel Cage With <ul style="list-style-type: none"> (1) Front and Back Steel Panel with Clips Tubular Style Galvanized Bars 4-Way Entry Galvanized Steel Pallet
Material:	Galvanized Steel
Tare Weight:	43.0 Kg
Overall Dimensions:	
• Length	47-1/2"
• Width	39-1/2"
• Height w/o Pallet	48-3/4"
• Height with Pallet	53-1/4"
Attachment Method:	(9) Star Head Screws (1) Each Corner (1) each centered on two sides and back (1) each side of recessed area for outlet flange



Description:	330 Gallon Rigid Plastic Inner Receptacle with <ul style="list-style-type: none"> 6" Buttress Threaded Top Opening Threaded Bottom Dispensing Opening
Material:	High Density Polyethylene, Natural, GBC3
Method of Manufacture	Blow Molded
Tare Weight	19.0 Kg
Capacity	
• Rated	330 Gallons
• Overflow	341.9 Gallons (1,294.0 Kg)
Overall Dimensions:	
• Length	45-1/2"
• Width	38-1/8"
• Height	48-1/2"
6" Fill Port Opening Thread Dimensions	
• Major Diameter	6.271"
• Minor Diameter	5.962"
• Neck Height:	1.245"
Dispensing Valve Opening Thread Dimensions	
• Major Diameter	2.928"
• Minor Diameter	2.734"
Markings (QC Audit):	 31HA1 GBC 21 GBC USA AL01 SPI "02" Recycling Symbol 9/16



DISCLAIMER

THIS INFORMATION IS PROVIDED AS A GENERAL GUIDE, INCLUDING DIMENSIONS. IT IS THE CUSTOMER'S RESPONSIBILITIES TO SELECT THE PROPER CONTAINER FOR PRODUCT AND APPLICATION COMPATIBILITY.

DISTRIBUTED BY:



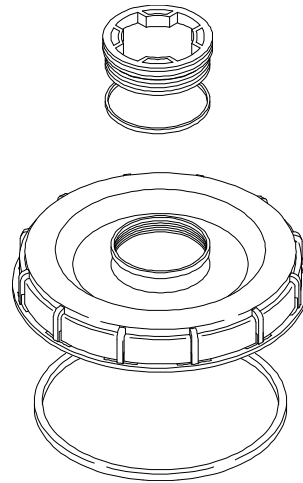
REF NO.:

DWG30439

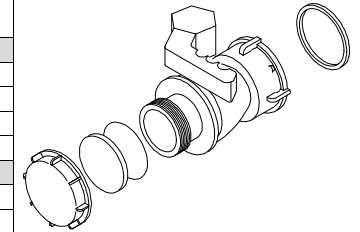
DESCRIPTION:

330 Gallon Reconditioned IBC Tote, Natural Bottle

Description:	56 x 4 Tri-Sure NPT Threaded Center Plug
Material:	Polypropylene, White
Tare Weight:	20.285 Grams
Overall Dimensions:	
• Height	0.803"
• Top Diameter	2.409"
Thread Dimensions:	
• Major Diameter	2.322"
• Minor Diameter	2.221"
Markings (QC Audit):	Tri-Sure® R17-11 4/15 U.S. Pat. 7287662 SPI "05" Recycling Symbol
Gasket:	
Material:	Polyethylene, Natural O-Ring
Tare Weight:	0.972 Grams
Thickness:	0.113"
Diameter:	2.388"
6" THREADED CAP (F-IC081)	
Description:	6" Threaded Fill Port Cap with Center Threaded Opening
Material:	High Density Polyethylene Black
Tare Weight:	199 Grams
Overall Dimensions:	
• Height	1.643"
• Top Diameter	6.405"
• Bottom Diameter	7.416"
Thread Dimensions (Center NPT Plug):	
• Major Diameter	2.357"
• Minor Diameter	2.248"
Thread Dimensions (Bottle):	
• Major Diameter	6.405"
• Minor Diameter	6.078"
Markings (QC Audit):	GC 2 12/15 SPI "02" PE HD Recycling Symbol
Gasket:	
Material:	White, EPDM Gasket
Tare Weight:	12 Grams
Thickness:	0.264"
Diameter:	6.124"



VALVE (F-IS112)		DRAWING
Description:	Threaded Ball Style Dispensing Valve	
Material:	High Density Polyethylene, Black / Glass Filled Polypropylene	
Tare Weight:	339 Grams	
Overall Dimensions:		
• Length (with cap)	5.106"	(5.012" without cap)
• Width	3.699"	
• Height	4.522"	
Thread Dimensions	To Accommodate Closure	To Accommodate Bottle
• Major Diameter	2.289"	2.975"
• Minor Diameter	2.146"	2.782"
Markings (QC Audit):	GC 4 SPI "2" PE-HD Recycling Symbol	
GASKET		
Material:	Green Viton Gasket	
Tare Weight:	12.621 Grams	
Thickness:	0.196"	
Diameter	2.652"	
CLOSURE		
Material:	High Density Polyethylene, Back	
Tare Weight:	17.162 Grams	
Overall Dimensions:		
• Diameter	2.891"	
• Height	0.846"	
Thread Dimensions		
• Major Diameter	2.356"	
• Minor Diameter	2.213"	
Markings (QC Audit):	1	
LINER		
Description:	Polyethylene Foam Liner	
Tare Weight:	1.552 Grams	
Thickness	0.120"	
Diameter	2.339"	
Seal:	Gold Foil Induction Seal	



DISCLAIMER

THIS INFORMATION IS PROVIDED AS A GENERAL GUIDE, INCLUDING DIMENSIONS. IT IS THE CUSTOMER'S RESPONSIBILITIES TO SELECT THE PROPER CONTAINER FOR PRODUCT AND APPLICATION COMPATIBILITY.

DISTRIBUTED BY:



REF NO.:

DWG30439

DESCRIPTION:

330 Gallon Reconditioned IBC Tote, Natural Bottle