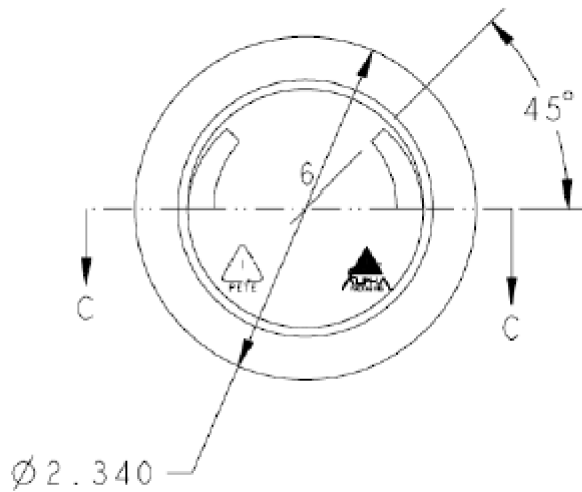
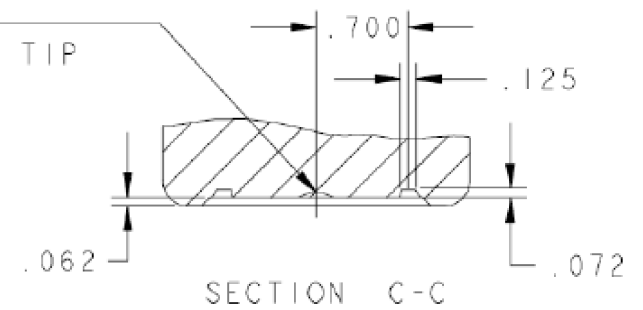


DETAIL A

- T = 2.206 ± .018
- E = 2.112 ± .018
- H = .408 ± .015
- I = 2.002 ± .015
- S = .046 ± .015



GATEWELL TO BE IN STRETCH ROD TIP



Overflow Capacity: 103 ml ± 4

**DISCLAIMER**

THIS INFORMATION IS PROVIDED AS A GENERAL GUIDE, INCLUDING DIMENSIONS. IT IS THE CUSTOMER'S RESPONSIBILITIES TO SELECT THE PROPER CONTAINER FOR PRODUCT AND APPLICATION COMPATIBILITY.

DISTRIBUTED BY:



DWG NO.:

DWG10064

DESCRIPTION:

3 oz PET Wide Mouth Jar, 58-400