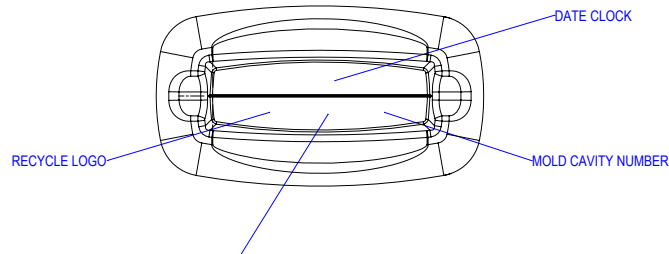
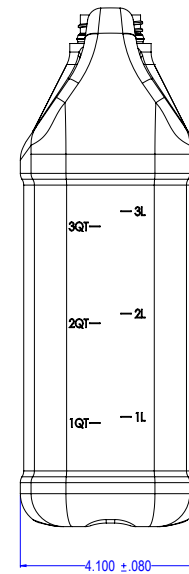
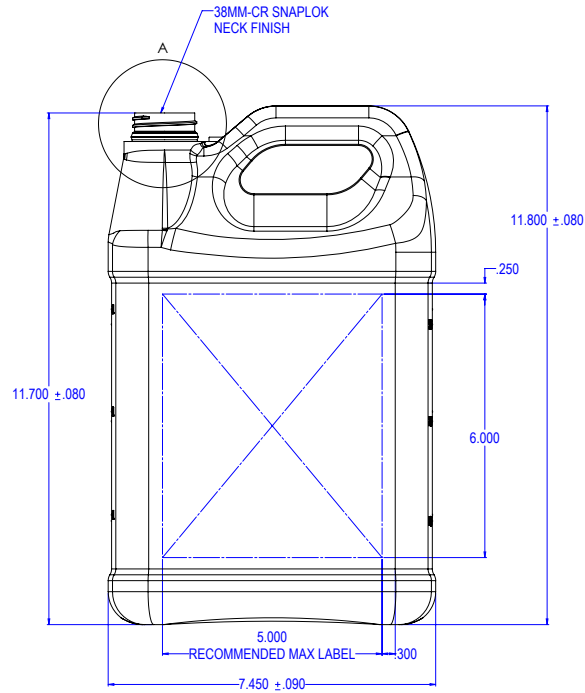
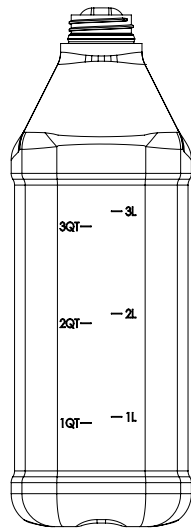
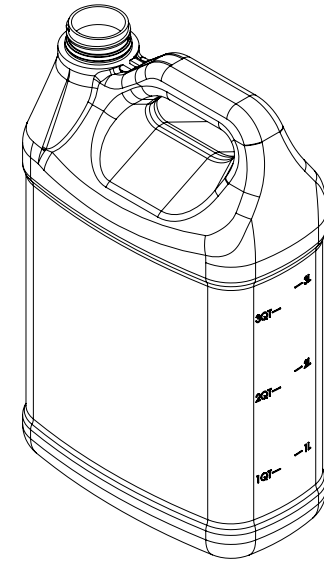
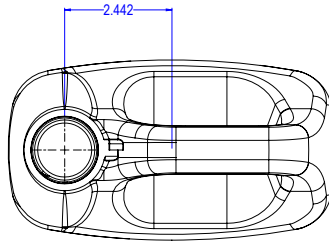



DETAIL A
SCALE 2 : 1



NOTES:
1. OVERFLOW CAPACITY = 144 FL/OZ (1.12 GAL).

DISCLAIMER
THIS INFORMATION IS PROVIDED AS A GENERAL GUIDE, INCLUDING DIMENSIONS. IT IS THE CUSTOMER'S RESPONSIBILITIES TO SELECT THE PROPER CONTAINER FOR PRODUCT AND APPLICATION COMPATIBILITY.

DISTRIBUTED BY:		REF NO.:	DWG30425
DESCRIPTION:		128 oz HDPE F-Style Trimline with Viewstripe, 38-400	

Bottle Attributes			
Height (Over Handle):	11.800 +/-0.080	Neck Finish:	38MM-REXAM CR SNAP LOK
Height (Over Neck):	11.700 +/-0.080	Neck ID:	N/A
Width:	7.450 +/-0.090	Viewstripe Location:	HANDLE
Depth:	4.100 +/-0.080	E Dimension:	1.370 +/-0.012
Wall Thickness:	0.015	T Dimension:	1.464 +/-0.012
Base and Shoulder Inserts:	<input type="checkbox"/>	S Dimension:	0.070 +/-0.015
		H Dimension:	0.650 +/-0.015
		Bead Diameter:	1.530 +0.022 -0.012
Blow Pin OD:	N/A	Ratchet Dimension:	N/A

DISCLAIMER

THIS INFORMATION IS PROVIDED AS A GENERAL GUIDE, INCLUDING DIMENSIONS. IT IS THE CUSTOMER'S RESPONSIBILITIES TO SELECT THE PROPER CONTAINER FOR PRODUCT AND APPLICATION COMPATIBILITY.

DISTRIBUTED BY:



REF NO.:

DWG30425

DESCRIPTION:

128 oz HDPE F-Style Trimline with Viewstripe, 38-400